

# LIVESTOCK TOURS

*Thank you for touring with us!*

PLEASE JOIN US NEXT YEAR. TOUR DATES AND LOCATION FOR 2026 TO BE ANNOUNCED ON OUR WEBSITE: [WWW.LIVESTOCKTOURS.COM](http://WWW.LIVESTOCKTOURS.COM)



FOLLOW ALONG WITH LIVESTOCK TOURS FOR DAILY PICTURES AND VIDEOS FROM THE BEAUTIFUL BRITISH COLUMBIA TOUR!

## PAST TOURS

- 2024 Two-Steppin' Across Texas
- 2023 Sandhills Legacy Ranch Tour
- 2022 Kentucky Bluegrass Ranch Study Tour II
- 2019 Montana Ranch Tour
- 2018 Ozark-Osage Ranch Tour
- 2017 Wyoming Big Horn Ranch Tour
- 2016 Texas Legacy Ranch Tour
- 2015 Alberta Wild Rose Canadian Ranch Tour
- 2014 South Dakota Prairie Lands Tour
- 2013 Great Northwest Tour
- 2012 California Central Coast Ranch Tour
- 2011 Virginia Colonial Ranch Tour
- 2010 Colorado High Country Tour

Welcome to  
Beautiful  
**British  
Columbia**

**LIVESTOCK TOURS**

**MAY 31-JUNE 6, 2025**

## Greetings Livestock Tour Attendees!

Welcome to beautiful British Columbia for the 2025 Livestock Tour! From the stunning Okanagan Valley to the rugged mountain ranges, you're in for some amazing views this week. We're excited to show you what ranching life looks like up here in Canada. Our tour stops will cover everything from unique management styles to the challenges (including grizzly bears!) of running livestock operations on massive stretches of Crown Land.

We've got a packed week ahead with visits to some of BC's top ranches. We want to thank the British Columbia Cattlemen's Association and their General Manager, Kevin Boon, for helping us pull this all together. With their assistance, we have lined up stops at many of the well-established ranches in the Kelowna and Kamloops region of BC. Plus, you'll get the chance to hear from some of the most respected voices in BC's livestock industry.

Of course, it's not all business. We've built in some time to kick back, take in the sights, and soak up the friendly Canadian hospitality we know you'll love. Between ranch, feedlot, and dairy tours, there'll be plenty of moments to explore and enjoy the scenery too.

We are proud of this year's lineup of stops and think you'll walk away with some fresh insights, practical tips, and ideas you can take back to your own operation. But just as important, we're excited to keep the Livestock Tour tradition alive, which means catching up with old friends, meeting new ones, and enjoying the good times and great company this group is known for.

Let's make it a week to remember!

## TOUR GUIDES



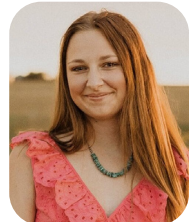
**Devin & Samantha Murnin**  
406-696-1502 (Devin)  
970-318-6551 (Samantha)  
smurnin@livestocktours.com



**Kevin & Mackenzie Murnin**  
406-853-4638 (Kevin)  
970-756-5306 (Mackenzie)  
kmurnin@hereford.org



**Kirby Brincefield**  
765-513-8118  
kirby@wlj.net



**Charley Maranville**  
719-892-0927  
cmaranville24@gmail.com

## Welcome to Canada!

It is with great excitement and a humble appreciation that we welcome you to the Livestock Tour this year. There is a rich heritage surrounding the tour, dating back to its origin when it was a bull-buying trip through the central valley of California. Without your support, the tour doesn't continue, and all of us greatly appreciate your involvement.

British Columbia is a rich agriculture province with over 15,000 farms and ranches scattered across a diverse topography that can grow a variety of products. BC accounts for just over 5% of Canada's national cowherd with nearly 200,000 beef cows from just over 4,000 ranches. These ranches manager nearly 5 million acres of privately held land with the average size being 1,047 acres.

Throughout this week, you will be visiting some of the region's most prestigious operations and the Livestock Tour's team can't wait to take you there.

Devin and Samantha Murnin have spent hours upon hours making sure this tour far exceeds any expectations. As many of you know, the WLJ Tours entity is now under leadership of the Murnin family. WLJ couldn't be more proud of what they are doing and the passion they have. They are a great family and represent everything we hope to be at WLJ.

Enjoy your week filled with great stops and great food. We hope you connect with old friends and hope you make some new ones!



Sincerely,

A handwritten signature in black ink, appearing to read "Logan Ipsen".

Logan Ipsen  
President, Western Livestock Journal

**Western Livestock Journal**  
Trusted since 1922. Reimagined for 2025.

# ITINERARY

---

## SATURDAY, MAY 31

2:30 p.m. – 5:00 p.m.	Arrival and check in Four Points by Sheraton Kelowna Airport
5:30 p.m.	Reception Meritage Room
6:30 p.m.	Banquet Dinner Meritage Room

## SUNDAY, JUNE 1

6:30 a.m. – 7:30 a.m.	Breakfast Meritage C/D - <i>Luggage out before breakfast</i>
7:30 a.m.	All luggage will be loaded
8:15 a.m.	Buses depart for Historic O'Keefe Ranch Vernon, BC – 45 minutes travel
9:00 a.m. – 10:30 a.m.	Historic O'Keefe Ranch Tour
10:30 a.m.	Buses depart for lunch 1 hour travel
11:30 a.m. – 12:30 p.m.	Lunch Sicamous Rec Centre
12:30 p.m.	Buses depart for Crystal Lake Ranch 15 minutes travel
12:45 p.m. – 3:00 p.m.	Crystal Lake Ranch Tour
3:00 p.m.	Buses depart for Coast Hotel Kamloops, BC – 2 hours 15 min travel
5:15 p.m.	Buses arrive at the hotel, luggage unloaded and check-in <i>Dinner on your own</i>

## MONDAY, JUNE 2

6:30 a.m. – 8:00 a.m.	Breakfast Salon
8:15 a.m.	Buses depart for Indian Gardens Ranch Savona, BC – 45 minutes travel
9:00 a.m. – 11:00 a.m.	Indian Gardens Ranch Tour
11:00 a.m.	Buses depart for lunch 30 minutes travel
11:30 a.m. – 1:00 p.m.	Lunch Logan Lake Rec Centre

---

1:00 p.m. .... **Buses depart for Rey Creek Ranch/Left Field Cider Mill**  
Logan Lake, BC - 15 minutes travel

1:15 p.m. 4:30 p.m. .... **Rey Creek Ranch and Left Field Cider Mill Tour**

4:30 p.m. .... **Buses depart for Coast Hotel**  
Kamloops - 1 hour travel

5:30 p.m. .... **Buses arrive at hotel**  
*Dinner on your own*

## **TUESDAY, JUNE 3**

6:30 a.m. - 8:00 a.m. .... **Breakfast**  
Salon

8:00 a.m. .... **Buses depart for Douglas Lake Cattle Co.**  
Douglas Lake, BC - 1 hour 15-minute travel

9:15 a.m. -12:00 p.m. .... **Douglas Lake Cattle Co. Tour**

12:00 p.m. - 1:30 p.m. .... **Lunch**  
Quilchena Hotel

1:30 p.m. .... **Buses depart for Nicola Ranch**  
Thompson-Nicola M, BC - 20 minutes travel

2:00 p.m. - 5:00 p.m. .... **Nicola Ranch Tour**

5:00 p.m. .... **Buses depart for Coast Hotel**  
Kamloops - 1 hour travel

6:00 p.m. .... **Buses arrive at hotel**

6:00 p.m. -7:30 p.m. .... **Group dinner at the Coast Hotel**  
Salon

## **WEDNESDAY, JUNE 4**

6:30 a.m. - 7:30 a.m. .... **Breakfast**  
Salon

7:00 a.m. .... **Buses out front of Coast Hotel- all luggage will be loaded**

8:00 a.m. .... **Buses depart for Westwold View Farms**  
Westwold, BC - 45 minutes travel

8:45 a.m. - 11:30 a.m. .... **Westwold View Farms Tour**

11:30 a.m. - 12:30 p.m. .... **Lunch at Westwold**

12:30 p.m. .... **Depart for H.S. Jansen & Sons Dairy**  
Armstrong, BC - 45 minutes travel

---

1:30 p.m. – 3:30 p.m. ....Jansen Dairy Tour  
3:30 p.m. .... Buses depart for Four Points by Sheraton Kelowna Airport  
1 hour travel  
4:30 p.m. .... Hotel check-in  
*Dinner on your own*

## **THURSDAY, JUNE 5**

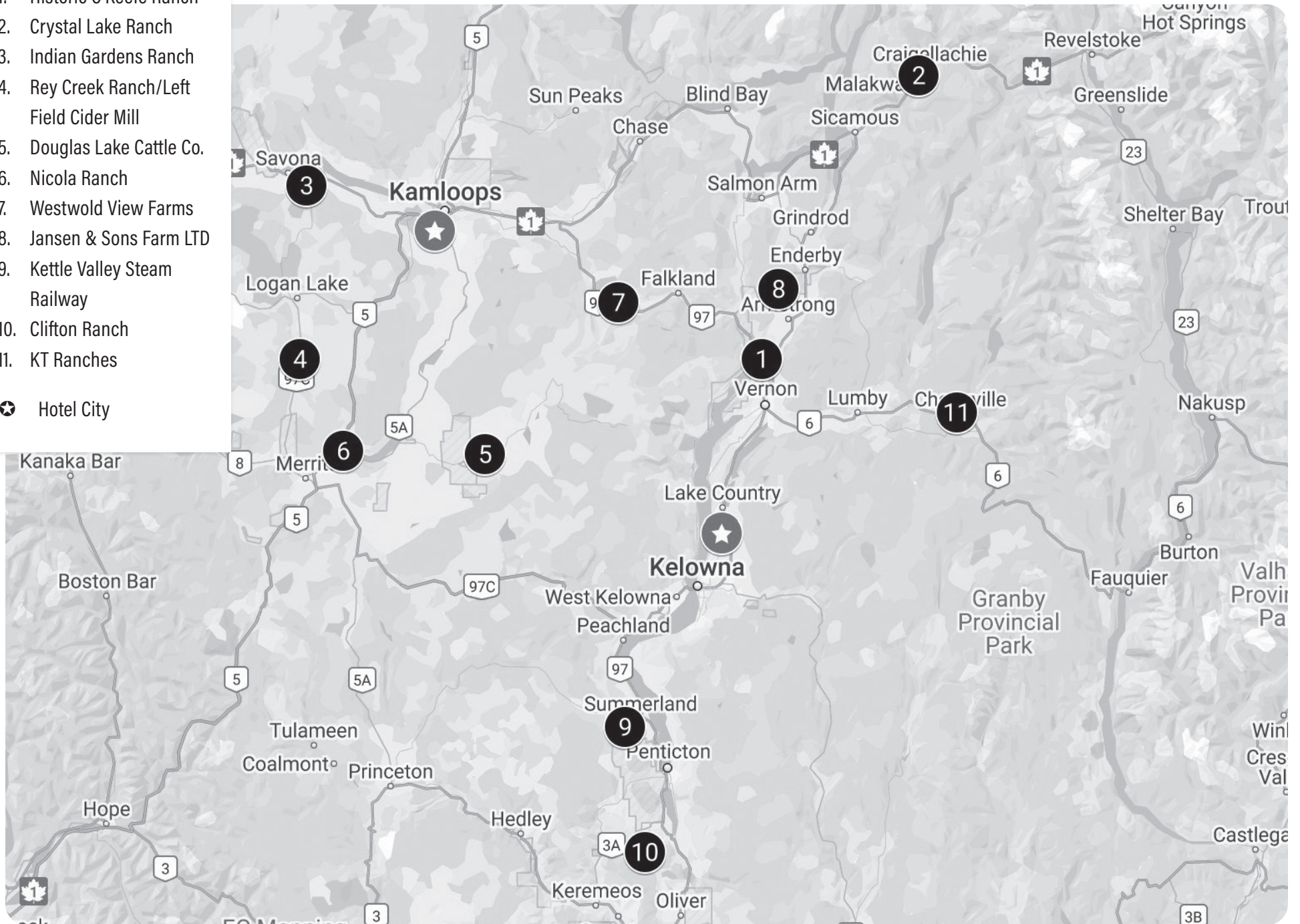
6:30 a.m. – 8:00 a.m. .... Breakfast  
Meritage C/D  
8:30 a.m. .... Buses depart for Kettle Valley Steam Railway  
1 hour 15-minute travel  
10:00 a.m. – 12:00 p.m. .... Kettle Valley Steam Railway Ride  
Summerland BC  
12:00 p.m. -1:00 p.m. .... Lunch at Kettle Valley Steam Railway  
1:00 p.m. .... Buses depart for Clifton Ranch  
Keremeos, BC – 1 hour travel  
2:00 p.m. – 4:00 p.m. .... Clifton Ranch Tour  
4:00 p.m. .... Buses depart for Four Points by Sheraton Hotel in Kelowna  
2-hour travel  
6:00 p.m. .... Arrive at hotel  
*Dinner on your own*

## **FRIDAY, JUNE 6**

6:30 a.m. – 8:00 a.m. .... Breakfast  
Hampton Inn A/B – next door to Four Points  
8:00 a.m. .... Buses depart for KT Ranches  
Cherryville, BC - 1 hour 20 minutes travel  
9:20 a.m. – 11:30 a.m. .... KT Ranches Tour  
11:30 a.m. – 12:30 p.m. .... Lunch at KT Ranches  
12:30 p.m. .... Buses depart for Kelowna  
1:45 p.m. .... Arrive at Four Points by Sheraton Hotel in Kelowna  
2:30 p.m. .... Tour stop to be announced.  
5:30 p.m. .... Tour concludes – hope to see you next year!  
*- Tour Concludes -*

# TOUR MAP

1. Historic O'Keefe Ranch
  2. Crystal Lake Ranch
  3. Indian Gardens Ranch
  4. Rey Creek Ranch/Left Field Cider Mill
  5. Douglas Lake Cattle Co.
  6. Nicola Ranch
  7. Westwold View Farms
  8. Jansen & Sons Farm LTD
  9. Kettle Valley Steam Railway
  10. Clifton Ranch
  11. KT Ranches
- ★ Hotel City



# HOST INFORMATION

---



**HISTORIC  
O'KEEFE  
RANCH**

**HISTORIC O'KEEFE RANCH**  
9380 BC-97 · Vernon, BC V1T 6M8

Three cowboys - Cornelius O'Keefe, Thomas Greenhow and Thomas Wood - rode into the Okanagan at just the right moment in history. In June of 1867, they were driving cattle north when they reached the head of Swan Lake. Thomas Wood would move on, but the other two men were here to stay, becoming some of the area's earliest settlers.

Cornelius thrived, building a mill, church, graveyard, general store, post office and blacksmith shop on his land. In the 1880s, he moved his growing second family from a log cabin into a mansion.

By 1900, the O'Keefe Ranch had grown to 12,000 acres and it included some of the best land in the area. But the industry was changing, the money moving from cattle to orchards, and O'Keefe sold much of his land in 1907. The Ranch is now owned by the City of Vernon and operated by the O'Keefe Ranch & Interior Heritage Society, a non-profit society.

## CRYSTAL LAKE RANCH

**Werner Stump Family**

**4471 Hickson · Malakwa, BC V0E 2J0**

**250-804-5136**

Crystal Lake Ranch is a 200 cow/calf operation located in the lush mountainous region of Malakwa, BC. The area has an abundance of rivers and streams, wetlands, salmon and species-at-risk habitat, ungulates and predators such as grizzly bear, wolves and cougars. The operation spans a wide elevation range with the home base being at 400 meters and grazing areas reaching 2400 meters. Urbanization and high recreation use add to the challenges facing this third-generation ranch.

Crystal Lake Ranch was awarded the BC Ranch Sustainability Award in 2023, a testimony to their dedication to sustainable practices, innovation and environmental awareness. They have completed several riparian protection projects and are leaders in the practice of utilizing silvopasture management regimes, growing trees and grass together.

The ranch is family owned and operated and has several enterprises to provide diversity, stability and income flows for family members. In addition to the cow/calf

side, enterprises include backgrounding feeders, forestry, drone services, vegetable production and short-term accommodation. Drones are used on their ranch for both granular and liquid applications and for crop imaging. Other innovative practices include virtual fencing to enhance rotational grazing, electric fencing for grizzly bears and a towable pivot operated on a gravity feed system.



**INDIAN GARDENS RANCH**  
**David and Bonnie Haywood-Farmer**  
**1140 Tunkwa Lake Road · Savona, BC V0K 2J0**  
**250-319-3173**

Indian Gardens Ranch was acquired in 1932 by the Haywood-Farmer family, who traded their property in Kamloops for the original ranchlands near Savona, BC. Now owned and run by the third and fourth generation of the family, the ranch extends over 200 square miles of deeded, leased and forestry licensed lands, comprising homesteads, corrals, feedlots, hayfields, timber and rangeland.

As a major beef cattle producer, Indian Gardens Ranch Ltd. runs over a thousand cow/calf pairs and an irrigated hay operation.

Modern technology and agricultural methods have improved ranching life since the old days of horse-drawn plows, swathers and hand-stacked hay. But the traditional rhythms of cattle ranching continue. Although the cattle are trucked off to sale, they are still handled and moved by the ranchers and cowboys on horseback as well as motorcycles and ATV's.

Calves are born in March and on into mid-May, when ranch life revolves around the calving pens, branding and herd and crop management. Breeding of the cows is all natural and the bred cows are overwintered and hand fed in the homestead corrals and feed grounds. They are primarily fed in the winter months on feed produced on our own cultivated hay fields.

Our ranch is very dependent on grass management. In spring the cattle are put out onto deeded and grazing lease land. Then when grasses are ready on the higher summer ranges, the cattle are driven up by cowboys, who also bring them back down again in the fall, to be sorted and shipped off to the sale yards.

Our ranch is a multi-family run operation. David & Bonnie, Chris & Amy, Bob & Kathleen, and Ted & Andrea Haywood-Farmer and their families are delighted to welcome you to Indian Gardens Ranch. We are very proud of our beautiful land and are pleased that you will be sharing in a little of our ranching life.

# REY CREEK RANCH

Gord Garthwaite and Dennis Garthwaite  
8821 BC-97C · Logan Lake, BC V1K 1M6  
250-378-7896

Rey Creek Ranch, located in the Nicola Valley of British Columbia, is a significant agricultural area in British Columbia. Rey Creek Ranch spans approximately 10,000 private acres, along with additional areas of Crown land tenure for grazing. The ranch has a herd of 1,000 red angus cows, which are bred to Charolais bulls. Calving runs through March through April and once completed the calves are branded and vaccinated. The pairs are then moved to spring grass on private ground and are moved through additional crown land pasture throughout the summer. In late September the pairs are gathered back to the home ranch to be sorted for sale. The mother cows remain on the ranch for pregnancy check and a cattle drive mid-November takes them to their fall grazing area. The herd range on fall grass and are brought back to the home ranch for winter feeding which takes place from mid-December to April. Rey Creek Ranch has 700 acres of irrigated crop land, which produces winter feed in the form of haylage and silage.

The Nicola Valley has a long-standing history of ranching dating back to the late 1800s. Rey Creek Ranch was established in 1950 by Greta Ann Garthwaite. She was a member of the Brooks family, who were prominent in the logging industry particularly through Brooks-Scanlon Lumber Co. and Powell River Logging Company. Dwight Brooks, Greta's Father started with early logging ventures in Minnesota, expanding to Bend, Oregon and Powel River BC. Greta branched out to ranching in her early years and established ranches in Clinton, Merritt and at the Rey Creek Ranch location which is now operated by her son Gordon and her grandson Dennis.



## LEFT FIELD CIDER MILL

Kate Garthwaite  
8821 BC-97C · Logan Lake, BC V1K 1M6  
250-315-5246 · [leftfieldcider.com](http://leftfieldcider.com)

Left Field Cider is a family owned and operated craft cider company run by sister's Theresa and Kate. Since 2011 the sisters have been making small batch ciders on their family ranch in BC's Interior. Their aim is to produce full juice ciders which reflect the natural characteristic of the BC fruit from which they are made. Left Field Cider is sold at local farmers' markets and in private liquor stores and restaurants throughout BC and Alberta.



# DOUGLAS LAKE CATTLE COMPANY

Douglas Lake, BC V0E 0B6  
250-350-3344 · [douglaslake.com](http://douglaslake.com)

In 1884, John Douglas Sr. sold this property to Charles Beak, who, along with Joseph Greaves, Charles Thomson and William Ward, founded Douglas Lake Cattle Company on June 30, 1886; a date which coincided with the first transcontinental train trip of the Canadian Pacific Railway.

Charles Beak was a cattle rancher who had already amassed some 22,000 acres in the Nicola Valley, whereas Greaves, Thomson and Ward were members of a cattle syndicate that purchased cattle with a view to obtaining the Canadian Pacific Railway beef contract. In 1892 Charles Beak sold his interest to the remaining shareholders.

Greaves and Thomson both remained until 1910 when Ward purchased their interest. By this time, the Ranch had grown to over 110,000 deeded acres, establishing it as the preeminent ranch in Canada. The Ranch remained under the ownership and management of successive members of the Ward family until 1940.

Throughout this period, the Douglas Lake Ranch's fortunes rose and fell repeatedly. From the highs of World War I to the depths of the Great Depression there were turbulent times. Revenues rose and fell whereas the costs of ranching continued to rise by early 1900s standards. Additionally, ranching was changing as horsepower began to be replaced by the combustion engine.

The Ward family sold to Colonel Victor Spencer and William Studdert in 1950. However, during the period to April 1951, Frank Ross (later to become Lieutenant-Governor of the Province of British Columbia) joined Spencer and Studdert as a third owner. Studdert subsequently sold to Spencer and Ross. By then, the deeded acres had increased to over 145,000 acres (58,000 hectares).

In 1959, Spencer and Ross sold Douglas Lake Ranch to Charles (Chunky) Woodward and John West. West's ownership continued until his death in 1968 at which time Woodward became the sole owner.

The Modern Era: In July of 1998 the Woodward family sold to Bernard J. Ebberts, a Canadian born resident of Jackson, Mississippi, who then sold the ranch to a fellow American in 2003. The company has since grown its land base through the purchase of the Alkali Lake Ranch (Williams Lake, BC) in 2008, the purchase of the James Cattle Company (adjacent to Alkali) in 2012, in 2013 the purchase of the Quilchena Cattle Company, and the purchase of Riske Creek Ranching in 2015. Most recently, Douglas Lake Cattle Company also acquired the historic Gang Ranch.



## NICOLA RANCH

John Parkes, Ranch Manager  
Merritt, BC VRK 1R2

Nicola Ranch was established in 1919 by Major Charles Sydney Goldman. Today, the home ranch location was once the town of Nicola. The ranch has changed ownership four times during its history. In 1958 Major Goldman sold to the Parker family from Texas. The Parkers owned the ranch from 1958-1978. An ownership group from Alberta then owned the ranch for period of 1978-1988. Current owners, the Liu family, purchased the ranch at that time. John Liu, serves as president of the company. Nicola Ranch is made up of four different ranches totaling 300,000 acres.



## WESTWOLD VIEW FARMS

6405 Westwold Station Road · Westwold, BC V0E 3B1  
250-371-7756

Westwold View Farms is family-owned and operated, located in Westwold, British Columbia. Established in 1983, the farm has been run by the Heemskerck and van Iterson families, who have dedicated themselves to raising BC quality beef. Over the years, they have built strong relationships with ranches across the province, sourcing quality cattle that are finished on their farm and processed locally.



## H.S. JANSEN & SONS FARM LTD

Dale Jansen  
5063 Knob Hill Road · Armstrong, BC V0E 1B4

Great Grandpa Steven Jansen started the original family farm in Matsqui Prairie, BC milking 30 cows in 1944. This farm was on the leading edge of technology in its day with a stanchion barn, no pipeline milking but he used buckets and ice bank cooling.

In 1962, Steven's son Herman purchased a farm on Glenmore Road in Matsqui Prairie and started farming with his wife Leida. They had the same luxurious equipment as his father Steven. Here they started milking 24 cows, but the number quickly increased when he received 12 cows in return for his wages from his father. After expanding the facilities at Glenmore Road, the opportunity came up to move to the home farm on Bates Road. In 1969, after Herman's eldest brother passed away, they couldn't say no, so they sold the Glenmore Farm and moved to the Bates Road Farm.

In 1989, when all three of Hermans boys were back on the family farm it was incorporated to what we now know as H.S. Jansen & Sons Farm Ltd.

In 1999, a call from the Okanagan stirred the interest to investigate the opportunity to relocate and grow. In 2001, the property that the home dairy is on was purchased. The building process started in 2005. We moved the cows to the Okanagan in July of 2007; at the time we milked 600 cows.

Since living in the Okanagan, we have slowly expanded our facilities and farmland. Currently Dale and Andrew along with their families are milking 1,400+ cows and farm approximately 2,000 irrigated acres, where we grow all our own forages; grains are the only thing that get brought in.

Our facility includes a 50-stall GEA rotary parlour, geothermal system to cool the milk, an up-right milk silo with another one on route. A separator/flush system that reclaims sand, which is then use to bed our free stalls. Three main milk cow barns, and a calving/calf barn.



**KETTLE VALLEY STEAM RAILWAY**  
18404 Bathville Road · Summerland BC, V0H 1Z8  
[kettlevalleyrail.org](http://kettlevalleyrail.org)

The Kettle Valley Railway (KVR) was built between 1910 and 1916 under the direction of Andrew McCulloch, Chief Engineer for the Canadian Pacific Railway's (CPR) new line in the southern interior of British Columbia. He was hired to build the Coast-to-Kootenay connection when the fear of leaving BC's mineral wealth vulnerable to exploitation by our neighbors reached its peak.

Politicians and corporate leaders, including CPR President Thomas Shaughnessy and James J Warren (the first President and originator of the whole idea of the line), stood behind the economic challenge and they moved to protect our province's resources. The result was the building of 325 miles (500 kilometers) of rail over and through three mountain ranges.

Once completed and over time, the KVR experienced the challenges all railways faced as transportation progress brought more and better roads as well as more easily accessible air travel. These factors, coupled with the challenges of operating a railway in face of the difficult terrain and weather, took their toll - by 1964, passenger service had ceased and in 1989, the last freight train rode the rails. Today the KVR is alive again, thanks to a dedicated society and financial assistance from our municipal, regional, provincial & federal governments.



## CLIFTON RANCH

Wade and Sandra Clifton

2810 Barcello Rd · Keremeos, BC VOX 1N4

[cliftonranch.com](http://cliftonranch.com)

The Clifton family first settled in the southern part of British Columbia in 1916 when Ivan Clifton became the local station manager of the Canadian Great Northern Railroad. The family purchased farm property in Keremeos and over the years, their son, Wilson Clifton, grew his interest in the cattle industry and started what is known today as Clifton Ranch. Over a decade later, Wade and Sandra Clifton, now run the ranch raising a commercial herd of 500 cow-calf pairs on 70,000 acres of range land and operate a feedlot for finishing their cattle to direct market beef to local consumers.

The family-run operation has garnered national attention for the long-term partnership with The Nature Trust of British Columbia, working together now for over three decades. The partnership focuses on improving environmental management practices while still maintaining an economically viable ranching operation. Areas of focus include improved water management, rotational grazing schedules, wildlife friendly fencing, protection of riparian areas, and supporting the 50+ species at risk that call the land home.

The family's commitment to sustainable ranching awarded the Clifton family with two awards in 2019: the Ranch Sustainability Award presented by the British Columbia Cattlemen's Association, and The Environmental Stewardship Award presented by the Canadian Cattle Association.



## KT RANCHES

Kevin and Tracy Carson, Owners · Geoff and

Lacey Anderson, Managers

Cherryville, BC

[ktranches.com](http://ktranches.com)

KT Ranches is located in the Northern part of the Okanagan Valley, with the main ranch being in Cherryville, B.C with additional locations in Ashton Creek and Kamloops. KT Ranches is owned by Kevin and Tracy Carson and is managed by Geoff and Lacey Anderson. KT Ranches is a purebred Angus and Simmental operation made up of about 1,000 breeding females, which about 600 are used annually for embryo transfer. KT Ranches holds an annual bull sale every year, in mid-March, with bulls selling to leading cattlemen throughout Canada and into the United States. We look forward to hosting you at the Ranch in Cherryville.

# TOUR MEMBERS

---

**Laura Barger**

1425 Branting Rd  
North Platte, NE 69101  
308-530-0396  
laurabarger59@gmail.com

**Shelly R. Barrett**

19245 East Gawne Rd  
Stockton, CA 95215  
209-609-6908  
barr1ranch@gmail.com

**Jean Barton**

23446 Volcano Way  
Red Bluff, CA 96080  
530-840-0667  
jbarton2013@gmail.com

**Terri Beam**

25050 Mariposa Rd  
Escalon, CA 95320  
209-604-5197  
tbeam@velociter.net

**Vicki Besse**

207 Spirit Cove  
Idaho Falls, ID 83404  
559-288-2954

**John & Marlene Bles**

PO Box 14  
Sprague River, OR 97639  
707-484-5696 · 707-364-0356  
jpbranches@hughes.net

**Beverly Blickenstaff**

460-880 Lake Crest Dr  
Janesville, CA 96114  
530-249-2595  
bblick@frontier.com

**Kevin & Linda Borrer**

23820 Tehama Ave  
Gerber, CA 96035  
530-624-6564  
530-624-6566  
tehamaranch@gmail.com

**Robert & Kathleen  
Buchanan**

13490 Algoma Rd  
Klamath Falls, OR 97601  
541-281-3557  
buchananangus120@gmail.  
com

**Joyce Bundy**

25585 Lincoln St  
Lo Molinos, CA 96055  
530-519-1818  
bundyjoyce@gmail.com

**Christine Canelis**

PO Box 40  
Cazadero, CA 95421  
707-484-5589  
christinecanelis@yahoo.com

**Bridget Capps**

130 S Orange Ave  
Lodi, CA 95240  
209-642-3181  
bcapps@softcom.net

**Peter Caputo**

110 Slim Dr  
Chester, CA 96020  
510-714-8925  
ccranchpete@gmail.com

**Jack & Charlene Connell**

215 Connell Rd  
Whitman, NE 69366  
308-458-8272  
jconnell@nebnet.net

**Tony Cunha Jr.**

845 S Dana Foothill Rd  
Nipomo, CA 93444  
559-707-4608  
jandjhil805@gmail.com

**Randy & Sandy Davison**

2019 Prairie Road  
Prairie, ID 83647  
208-870-8370  
randy20219@msn.com

**Norman (Norm) Dickenson  
& Katherine (Kit) Simmie**

1797 Judson Ln  
Santa Rosa, CA 95401  
707-479-5758  
kitsimmie@yahoo.com

**Frank & Mary Ellen Durjava**

19415 Bloss Ave  
Hilmar, CA 95324  
209-765-9221 · 209-605-3488  
fdurjava@gmail.com

**Gene & Wynarda Erquiaga**

1720 County Road 30  
Cedarville, CA 96104  
530-515-2157  
gwerquiaga@gmail.com

**Wayne & Sandra Farrell**

16785 Blackie Rd  
Salinas, CA 93907  
831-596-2388  
firststrike@redshift.com

**Linda Ferrasci**

PO Box 304  
Carmel Valley, CA 93924  
831-320-7531  
lindastastypork@gmail.com

# TOUR MEMBERS

---

**Patricia J. Foard**

5732 Hinds Rd  
Oakdale, CA 95361  
209-247-8891  
pattifoard@yahoo.com

**Zeke & Susie Frost**

45600 Brown Rd  
Happy, TX 79042  
806-676-9109  
frostsusie@midplains.coop

**Della Gaar**

1360 Frewert Rd.  
Lathrop, CA 95330  
209-471-3343  
della1horse@aol.com

**Linda Galloway**

3557 Piner Rd  
Santa Rosa, CA 95401  
707-545-7049  
jervan4@yahoo.com

**Gregg & Yolanda Gibbons**

8205 N Fairway View Dr  
Tucson, AZ 85742  
520-444-5554  
gg@cti-az.com

**Larry Godinho**

2624 Riverpark Dr  
Modesto, CA 95351  
209-226-2999  
behappy526@sbcglobal.net

**Linda Harness & Bill Harvey**

21211 Trefoil Ln  
Cottonwood, CA96022  
530-690-9799  
llharness@att.net

**Merrie Hathaway**

33290 Antelope Ln  
Squaw Valley, CA 93675  
562-944-6563  
merrie.hathaway63@gmail.com

**Rebecca Higgins**

941 Fred Cooper Rd  
McMinnville, TN 37110  
615-848-3332  
rebecca.3332@yahoo.com

**Michol Jervan**

444 Yreka Ager Rd  
Montague, CA 96064  
503-340-5480  
mjervan1234@gmail.com

**Keith & Debbie Johnson**

1745 W Falcon Way  
Amado, AZ 85645  
520-444-7710 · 520-730-7464  
djneh98@gmail.com

**Larry & Becky Jones**

PO Box 230  
Holcomb, KS 67851  
620-272-4668  
larryjones@wbsnet.org

**Mike Kelly & Vickie Wheatlake Kelly**

719 S Maloney Dr  
North Platte, NE 69101  
308-386-8175  
mkelly@bankwnb.com

**Richard & Bev Leavitt**

3509 Stampede Ranch Rd  
Cheyenne, WY 82007  
307-214-2200 · 307-631-1820  
richardwleavitt@gmail.com ·  
bevestesleavitt@gmail.com

**Sam & Sheree Ledgerwood**

141 Howell Grade Rd  
Clarkston, WA 99403  
509-780-8568  
sjlwood@gmail.com

**Laurance & Holly Mahan**

12307 Vail Cut Off Rd SE  
Rainier, WA 98576  
360-763-1891 · 360-763-1892  
hollywmahan@gmail.com

**Laurel Marsters**

718-080 Hemphill Rd  
Janesville, CA 96114  
530-310-1144  
marstersl@frontiernet.net

**Kendra McCluskey**

13700 Lyman Ln  
Red Bluff, CA 96080  
530-727-7575  
kendragator@gmail.com

**Carley Metcalf**

38825 Willowood Ln  
Squaw Valley, CA 93675  
559-573-4700  
rustyacres93@gmail.com

**Terry & Gale Moroney**

4081 Central Ln  
Winters, CA 95694  
530-795-3203  
windyglenranch@gmail.com

**Bert & Anita Murnin**

106 Meadow Ln  
Miles City, MT 59301  
406-853-4019 · 406-853-7625  
anitamurnin@gmail.com

---

**Richard Kim Murphy**

PO Box 105  
Bodega, CA 94922  
707-953-6174  
ramurphy@sonic.net

**Raymond & Jeriann Nobile**

7509 Clarke  
Amarillo, TX 79108  
806-674-6760  
jeriann.nobile@hotmail.com

**Bert Denny Owens &  
Nanette Eller**

PO Box 728  
Red Bluff, CA 96080  
530-524-4900  
bert.owens@aglandbrokers.com

**Jason & Lori Plantiko**

3019 Poppy St  
Grand Junction, CO 81506  
970-903-6816 · 970-946-2259  
jplantiko@yahoo.com ·  
loriplantiko@yahoo.com

**Ray Prock Sr.**

5712 N. Hickman Rd  
Denair, CA 95316  
209-652-5348

**Toni J. Renz**

1651 Tiburon Dr  
Hollister, CA 95023  
831-801-0389  
tjaginhollister@yahoo.com

**Adam Renz**

PO Box 1019  
Tres Pinos, CA 95075  
831-801-9395  
arenzconstruction@gmail.com

**Doyle & Connie Richards**

2514 160th St  
Tingley, IA 50863  
641-340-0395  
cjr-richards430@gmail.com

**Matt Rieber**

Box 135  
Shelby, IA 51570  
712-406-6305

**Brent D. & Lisa D. Robins**

660 W Main St  
Salina, UT 84654  
435-529-0103 · 435-979-7088  
lrobins660@gmail.com

**Robert P. & R. Jane Rose**

6847 US Hwy 101  
South Bend, WA 98586  
360-942-8307  
roseranch36@gmail.com

**Glenn & Bev Rowe**

PO Box 86  
Lorimor, IA 50149  
515-249-9535  
go4beef@grm.net

**Ron & Stephanie  
Sakugawa**

26383 County Road 30  
Julesburg, CO 80737  
808-281-3661  
stsakugawa@gmail.com

**Patrick & Lorraine  
Sheehan**

PO Box 250  
Baggs, WY 82321  
970-629-5809  
lorraine.mjk@gmail.com

**Mike & Tina Sommers**

435 Mobile Dr  
Canyon Creek, TX 75077  
214-405-2730 · 214-402-5081  
mikesommers@verizon.net

**John & Bobbi Stoddart**

2155 Pony Rock Rd  
Jordan Valley, OR 97910  
208-850-4701  
jvemsja2@yahoo.com

**Vic & Carrie Stokes**

20647 State Route 20  
Twisp, WA 98856  
509-429-3329  
72carrie.stokes@gmail.com

**John & Theresa Taylor**

17980 Taylor Ranch Ln  
Plush, OR 97637  
541-219-1144  
taylorranch33@gmail.com

**Rick & Trudy Vidal**

1375 Drift Creek Rd NE  
Silverton, OR 97381  
503-930-6756  
503-910-6925  
t.vidal@att.net

**Joe & Ginger Wallace**

209 N Texas Ave  
Hereford, TX 79045  
806-344-6138 · 806-344-6139  
gingerw@wtrt.net

**Kathryn Wemple**

PO Box 125  
Milford, CA 96121  
530-251-3273

# TOUR MEMBERS

---

**Gregg & Shirlee Whitaker**

8208 Victory Dr  
Amarillo, TX 79119  
806-433-5194 · 806-674-0927  
jgwhit51@gmail.com

**James Whittaker**

PO Box 240  
Leadore, ID 83464  
208-303-0102  
fjwhitt@yahoo.com

**Bill & Patsy Wilber**

524 Juniper Ave  
Hines, OR 97738  
541-589-1882  
patsy41wilber@gmail.com

**Pat & Judy Wilber**

52788 Hwy 20E  
Drewsey, OR 97904  
541-589-0231 · 541-589-0835  
patwilberdrf@icloud.com

**Sandy Williams**

PO Box 1196  
Tres Pinos, CA 95075  
831-207-0513  
swill2734@aol.com

**Grant R. Kimberlyn (Kim) A.**

**Yozamp**  
PO Box 699  
Yamhill, OR 97148  
503-481-0240 · 503-964-1212  
gkyozamp@gmail.com

**Benjamin (Ben) &  
Katherine (Kathy) Zandstra**

PO Box 334  
Cedarville, CA 96104  
530-249-9960  
benzanstra71@hotmail.com

**Roger Zanetti**

PO Box 67  
Nipomo, CA 93444  
805-925-5840  
rgzanetti@verizon.net

Special thanks to



for sponsoring the tour luggage tags!